



St. Paulinus Catholic Primary Academy

Part of the Blessed Peter Snow Catholic Academy

Inspiring all to live, learn and love in the light of Jesus.

(cf John 8:12)



Complaints Policy Procedure

Responsible Governor Committee: Full Governing Body

Version control

Version number	Date	Revisions made	By who?	Approval date
V01	27/01/2023	Update	NLohn	

'An outstanding school, which is deeply committed to the Catholic mission... this school inspires all within this faith community to live life to the full.' Ofsted 2017

Tel: (01924) 488282

TEMPLE ROAD, DEWSBURY, WEST YORKSHIRE, WF13 3QE

E-mail: office@stpaulinus.org

Website: www.stpaulinuscps.org.uk



St. Paulinus Catholic Primary Academy

Part of the Blessed Peter Snow Catholic Academy

Inspiring all to live, learn and love in the light of Jesus.

(cf John 8:12)



Introduction

1. This policy statement sets out the school's approach to dealing with parental concerns and complaints.
2. We value good home/school relations and will, therefore, do everything we can to establish and maintain them. This includes seeking to resolve any concerns or complaints promptly, and to the satisfaction of all concerned.
3. We welcome feedback on what parents feel we do well, or not so well, as a school. We will carefully consider all feedback, whether positive or negative, and will review our policies and practices accordingly.
4. We will treat all concerns and complaints seriously and courteously and will advise parents and others of the school's procedure for dealing with their concerns. In return, we expect parents and other complainants to behave respectfully towards all members of the school community. In particular, any disagreement with the school should not be expressed inappropriately or in front of pupils.
5. All school staff and members of the Governing Body, will receive a copy of this policy statement and will be familiar with the school's procedures for dealing with parental concerns and complaints, to which they will have access as required. The policy is available on request to parents.
6. The school's procedures will be reviewed regularly and updated as necessary.
7. Staff and governors will receive training in handling parental concerns and complaints as appropriate. This may be on an individual basis, or as a group activity for all staff, or for specific groups, such as the office staff or members of the Governing Body.
8. Whilst we seek to resolve concerns and complaints to the satisfaction of all parties, it may not be possible to achieve this in every case. We will, therefore, use our option to close a complaint before all the stages of the school's procedures have been exhausted, if this appears to be appropriate.
9. The government and the local authority advocate resolution of parental concerns and complaints at school level wherever possible, in the interests of maintaining good home/school relations. The role of the local authority in advising parents and schools on the handling of concerns and complaints is set out in the school's procedures.

Who can make a complaint?

This complaints procedure is not limited to parents or carers of children that are registered at the school. Any person, including members of the public, may make a complaint to St. Paulinus Catholic Primary Academy about any provision of facilities or services that we provide. Unless complaints are dealt with under separate statutory procedures (such as appeals relating to exclusions or admissions), we will use this complaints procedure.

'An outstanding school, which is deeply committed to the Catholic mission... this school inspires all within this faith community to live life to the full.' Ofsted 2017

TEMPLE ROAD, DEWSBURY, WEST YORKSHIRE, WF13 3QE

Tel: (01924) 488282

E-mail: office@stpaulinus.org

Website: www.stpaulinuscps.org.uk



St. Paulinus Catholic Primary Academy

Part of the Blessed Peter Snow Catholic Academy

Inspiring all to live, learn and love in the light of Jesus.

(cf John 8:12)



The difference between a concern and a complaint

A concern may be defined as '*an expression of worry or doubt over an issue considered to be important for which reassurances are sought*'.

A complaint may be defined as '*an expression of dissatisfaction however made, about actions taken or a lack of action*'.

It is in everyone's interest that concerns and complaints are resolved at the earliest possible stage. Many issues can be resolved informally, without the need to use the formal stages of the complaint's procedure. St Paulinus Catholic Primary Academy takes concerns seriously and will make every effort to resolve the matter as quickly as possible.

If you have difficulty discussing a concern with a particular member of staff, we will respect your views. In these cases, Miss Hayes (Headteacher), will refer you to another staff member. Similarly, if the member of staff directly involved feels unable to deal with a concern, Miss Hayes will refer you to another staff member. The member of staff may be more senior but does not have to be. The ability to consider the concern objectively and impartially is more important.

We understand however, that there are occasions when people would like to raise their concerns formally. In this case, St. Paulinus Catholic Primary Academy will attempt to resolve the issue internally, through the stages outlined within this complaints procedure.

How to raise a concern or make a complaint

A concern or complaint can be made in person, in writing or by telephone. They may also be made by a third party acting on behalf on a complainant, as long as they have appropriate consent to do so.

Concerns should be raised with either the class teacher or Headteacher. If the issue remains unresolved, the next step is to make a formal complaint.

Complainants should not approach individual governors to raise concerns or complaints. They have no power to act on an individual basis and it may also prevent them from considering complaints at Stage 2 of the procedure.

Complaints against school staff (except the Headteacher) should be made in the first instance, to Miss Hayes (the Headteacher) via the school office. Please mark them as Private and Confidential.

Complaints that involve or are about the Headteacher should be addressed to Mr Regan (the Chair of Governors), via the school office. Please mark them as Private and Confidential.

Complaints about the Chair of Governors, any individual governor or the whole governing body should be addressed to Karen Millar via the school office. Please mark them as Private and Confidential.

'An outstanding school, which is deeply committed to the Catholic mission... this school inspires all within this faith community to live life to the full.' Ofsted 2017

TEMPLE ROAD, DEWSBURY, WEST YORKSHIRE, WF13 3QE

Tel: (01924) 488282

E-mail: office@stpaulinus.org

Website: www.stpaulinuscps.org.uk



St. Paulinus Catholic Primary Academy

Part of the Blessed Peter Snow Catholic Academy

Inspiring all to live, learn and love in the light of Jesus.

(cf John 8:12)



For ease of use, a template complaint form is included at the end of this procedure. If you require help in completing the form, please contact the school office. You can also ask third party organisations like the Citizens Advice to help you.

In accordance with equality law, we will consider making reasonable adjustments if required, to enable complainants to access and complete this complaints procedure. For instance, providing information in alternative formats, assisting complainants in raising a formal complaint or holding meetings in accessible locations.

Anonymous complaints

We will not normally investigate anonymous complaints. However, the Headteacher or Chair of Governors, if appropriate, will determine whether the complaint warrants an investigation.

Time scales

You must raise the complaint within three months of the incident or, where a series of associated incidents have occurred, within three months of the last of these incidents. We will consider complaints made outside of this time frame if exceptional circumstances apply.

Complaints received outside of term time

We will consider complaints made outside of term time to have been received on the first school day after the holiday period.

Scope of this Complaints Procedure

This procedure covers all complaints about any provision of community facilities or services by St. Paulinus Catholic Primary Academy, other than complaints that are dealt with under other statutory procedures, including those listed below.

'An outstanding school, which is deeply committed to the Catholic mission... this school inspires all within this faith community to live life to the full.' Ofsted 2017

TEMPLE ROAD, DEWSBURY, WEST YORKSHIRE, WF13 3QE

Tel: (01924) 488282

E-mail: office@stpaulinus.org

Website: www.stpaulinuscps.org.uk



St. Paulinus Catholic Primary Academy

Part of the Blessed Peter Snow Catholic Academy

Inspiring all to live, learn and love in the light of Jesus.

(cf John 8:12)



Exceptions	Who to contact
<ul style="list-style-type: none"> Admissions to schools Statutory assessments of Special Educational Needs School re-organisation proposals 	<p>Concerns about admissions, statutory assessments of Special Educational Needs, or school re-organisation proposals should be raised with Kirklees Council</p>
<ul style="list-style-type: none"> Matters likely to require a Child Protection Investigation 	<p>Complaints about child protection matters are handled under our child protection and safeguarding policy and in accordance with relevant statutory guidance.</p> <p>If you have serious concerns, you may wish to contact the local authority designated officer (LADO) who has local responsibility for safeguarding or the Multi-Agency Safeguarding Hub (MASH). <Email: cases@kirklees.gov.uk></p>
<ul style="list-style-type: none"> Exclusion of children from school* 	<p>Further information about raising concerns about exclusion can be found at: www.gov.uk/school-discipline-exclusions/exclusions.</p> <p><i>*complaints about the application of the behaviour policy can be made through the school's complaints procedure.</i> < http://www.stpaulinuscps.org.uk/policies></p>
<ul style="list-style-type: none"> Whistleblowing 	<p>We have an internal whistleblowing procedure for all our employees, including temporary staff and contractors.</p> <p>The Secretary of State for Education is the prescribed person for matters relating to education for whistleblowers in education who do not want to raise matters direct with their employer. Referrals can be made at: www.education.gov.uk/contactus.</p> <p>Volunteer staff who have concerns about our school should complain through the school's complaints procedure. You may also be able to complain direct to the LA or the Department for Education (see link above), depending on the substance of your complaint.</p>
<ul style="list-style-type: none"> Staff grievances 	<p>Complaints from staff will be dealt with under the school's internal grievance procedures.</p>

'An outstanding school, which is deeply committed to the Catholic mission... this school inspires all within this faith community to live life to the full.' Ofsted 2017

TEMPLE ROAD, DEWSBURY, WEST YORKSHIRE, WF13 3QE

Tel: (01924) 488282

E-mail: office@stpaulinus.org

Website: www.stpaulinuscps.org.uk



St. Paulinus Catholic Primary Academy

Part of the Blessed Peter Snow Catholic Academy

Inspiring all to live, learn and love in the light of Jesus.

(cf John 8:12)



Exceptions	Who to contact
<ul style="list-style-type: none"> Staff conduct 	<p>Complaints about staff will be dealt with under the school's internal disciplinary procedures, if appropriate.</p> <p>Complainants will not be informed of any disciplinary action taken against a staff member as a result of a complaint. However, the complainant will be notified that the matter is being addressed.</p>
<ul style="list-style-type: none"> Complaints about services provided by other providers who may use school premises or facilities 	<p>Providers should have their own complaints procedure to deal with complaints about service. Please contact them direct.</p>
<ul style="list-style-type: none"> National Curriculum - content 	<p>Please contact the Department for Education at: www.education.gov.uk/contactus</p>

If other bodies are investigating aspects of the complaint, for example the police, local authority (LA) safeguarding teams or Tribunals, this may impact on our ability to adhere to the timescales within this procedure or result in the procedure being suspended until those public bodies have completed their investigations.

If a complainant commences legal action against St. Paulinus Catholic Primary Academy in relation to their complaint, we will consider whether to suspend the complaints procedure in relation to their complaint until those legal proceedings have concluded.

Resolving complaints

At each stage in the procedure, St. Paulinus Catholic Primary Academy wants to resolve the complaint. If appropriate, we will acknowledge that the complaint is upheld in whole or in part. In addition, we may offer one or more of the following:

- an explanation
- an admission that the situation could have been handled differently or better
- an assurance that we will try to ensure the event complained of will not recur
- an explanation of the steps that have been or will be taken to help ensure that it will not happen again and an indication of the timescales within which any changes will be made
- an undertaking to review school policies in light of the complaint
- an apology.

'An outstanding school, which is deeply committed to the Catholic mission... this school inspires all within this faith community to live life to the full.' Ofsted 2017

TEMPLE ROAD, DEWSBURY, WEST YORKSHIRE, WF13 3QE

Tel: (01924) 488282

E-mail: office@stpaulinus.org

Website: www.stpaulinuscps.org.uk



St. Paulinus Catholic Primary Academy

Part of the Blessed Peter Snow Catholic Academy

Inspiring all to live, learn and love in the light of Jesus.

(cf John 8:12)



Withdrawal of a Complaint

If a complainant wants to withdraw their complaint, we will ask them to confirm this in writing.

School Concerns / Complaints Procedure

The majority of concerns from parents, carers and others are handled under the following general procedures.

(Please note: each stage of the process must be completed before the matter can be escalated to the formal stage. The term "Complaint" is only used once the matter has escalated to the formal stage).

To ensure you receive an effective response to your concern / complaint, it will be helpful if you :

- Co-operate with the school in seeking a solution to the concern / complaint;
- Express your concerns in full as early as possible;
- Respond promptly to request for information or meetings or in agreeing the details of the concern / complaint;
- Ask for assistance if needed; and
- Treat all those involved in the complaint, with respect.

The procedure is divided into three stages;

- **The informal stage(s)** – aim to resolve the concern through informal contact at the appropriate level in school
- **Stage one** – is the first formal stage at which written complaints are considered by the Headteacher or Chair. The Headteacher or Chair investigates and responds within 15 school days.
- If the complainant is still not satisfied with the way in which the complaint has been handled the case can be referred to a panel of governors, **Stage two – A meeting of the complaints panel is the last school based stage of the process**
- **Secretary of State Review** – Complainant may appeal to the Secretary of State if they consider the Governing Body acted illegally or unreasonably.

How each of these stages operates is shown in the flow chart overleaf and is explained below :

'An outstanding school, which is deeply committed to the Catholic mission... this school inspires all within this faith community to live life to the full.' Ofsted 2017

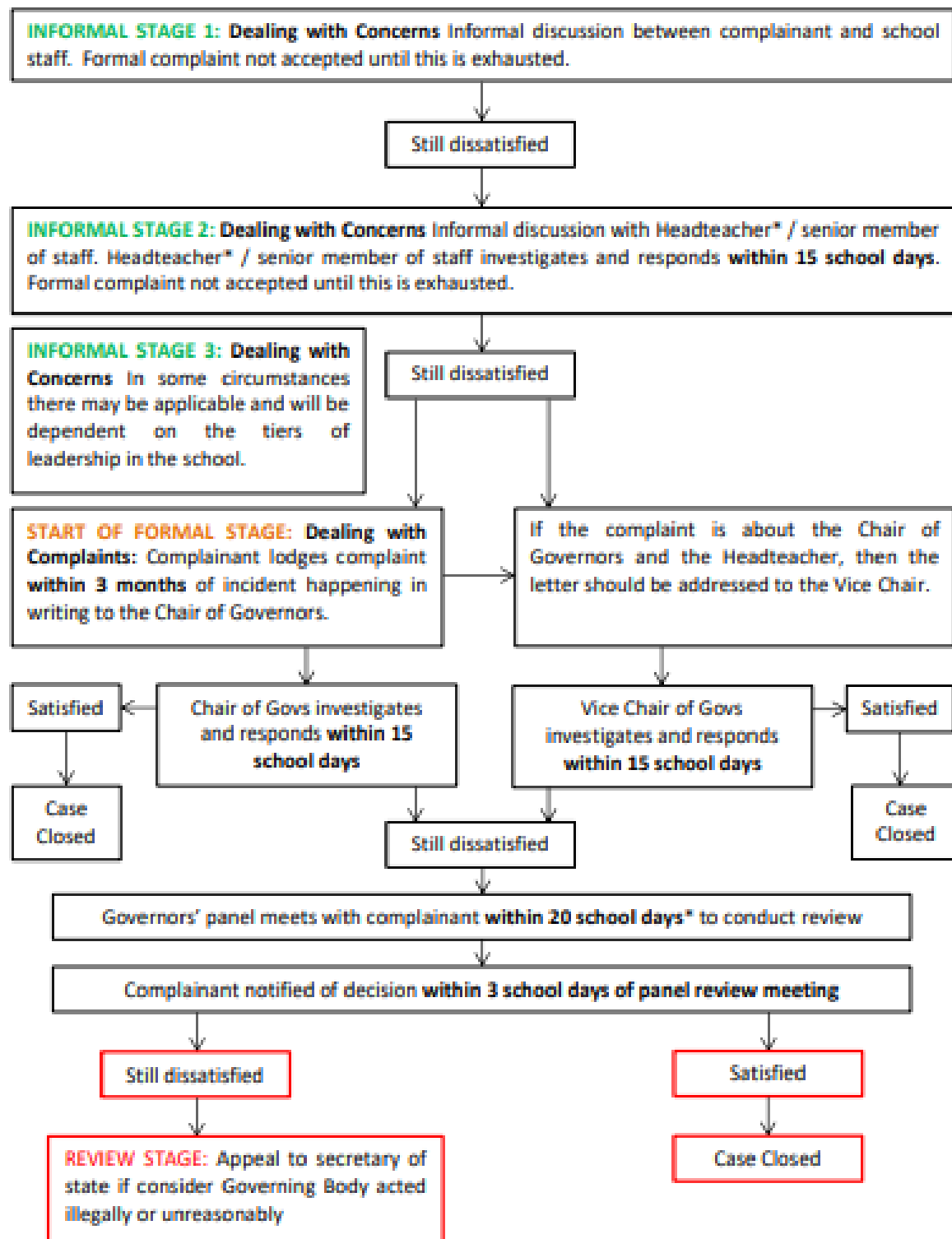
TEMPLE ROAD, DEWSBURY, WEST YORKSHIRE, WF13 3QE

Tel: (01924) 488282

E-mail: office@stpaulinus.org

Website: www.stpaulinuscps.org.uk

Dealing with Concerns / Complaints about Schools – Flowchart



'An outstanding school, which is deeply committed to the Catholic mission... this school inspires all within this faith community to live life to the full.' Ofsted 2017

TEMPLE ROAD, DEWSBURY, WEST YORKSHIRE, WF13 3QE

Tel: (01924) 488282

E-mail: office@stpaulinus.org

Website: www.stpaulinuscps.org.uk



St. Paulinus Catholic Primary Academy

Part of the Blessed Peter Snow Catholic Academy

Inspiring all to live, learn and love in the light of Jesus.

(cf John 8:12)



(* In some circumstances this may not be possible in which case the complainant will be advised of a possible delay).

Informal stage – your initial contact with the school

1. Many concerns will be dealt with informally when you make them known to us. The first point of contact should be your child's class teacher.
2. Once your concern is made known to us, we will see you, or contact you by telephone or in writing, as soon as possible. If it is necessary, all members of staff know how to refer to the appropriate person with responsibility for your particular issues. He or she will make a clear note of the details and will check later to make sure that the matter has been followed up.
3. Any actions or monitoring of the situation that has been agreed, will be communicated clearly and we will confirm this in writing to you.
4. If necessary, we will contact appropriate people who may be able to assist us with our enquiries into your concern.
5. We will normally update you on the progress of our enquiries within 10 school days. Once we have responded to your concern, you will have the opportunity of asking for the matter to be considered further.
6. If you are still dissatisfied following this informal approach, your concern will become a formal complaint and we will deal with it at the next stage

Stage 1 – formal consideration of your complaint

Formal complaints must be made to the Headteacher (unless they are about the Headteacher), via the school office. This may be done in person, in writing (preferably on the Complaint Form), or by telephone.

The Headteacher will record the date the complaint is received and will acknowledge receipt of the complaint in writing (either by letter or email) **within 3 school days**.

Within this response, the Headteacher will seek to clarify the nature of the complaint, ask what remains unresolved and what outcome the complainant would like to see. The Headteacher can consider whether a face to face meeting is the most appropriate way of doing this.

Note: The Headteacher may delegate the investigation to another member of the school's senior leadership team but not the decision to be taken.

During the investigation, the Headteacher (or investigator) will:

'An outstanding school, which is deeply committed to the Catholic mission... this school inspires all within this faith community to live life to the full.' Ofsted 2017

TEMPLE ROAD, DEWSBURY, WEST YORKSHIRE, WF13 3QE

Tel: (01924) 488282

E-mail: office@stpaulinus.org

Website: www.stpaulinuscps.org.uk



St. Paulinus Catholic Primary Academy

Part of the Blessed Peter Snow Catholic Academy

Inspiring all to live, learn and love in the light of Jesus.

(cf John 8:12)



- if necessary, interview those involved in the matter and/or those complained of, allowing them to be accompanied if they wish
- keep a written record of any meetings/interviews in relation to their investigation.

At the conclusion of their investigation, the Headteacher will provide a formal written response **within 15 school days** of the date of receipt of the complaint.

If the Headteacher is unable to meet this deadline, they will provide the complainant with an update and revised response date.

The response will detail any actions taken to investigate the complaint and provide a full explanation of the decision made and the reason(s) for it. Where appropriate, it will include details of actions St. Paulinus Catholic Primary Academy will take to resolve the complaint.

The Headteacher will advise the complainant of how to escalate their complaint should they remain dissatisfied with the outcome of Stage 1.

If the complaint is about the Headteacher, or a member of the governing body (including the Chair or Vice-Chair), a suitably skilled governor will be appointed to complete all the actions at Stage 1.

Complaints about the Headteacher or member of the governing body must be made to the Clerk, via the school office.

If the complaint is:

- jointly about the Chair and Vice Chair or
- the entire governing body or
- the majority of the governing body

Stage 1 will be considered by an independent investigator appointed by the governing body. At the conclusion of their investigation, the independent investigator will provide a formal written response.

Stage 2 – consideration by a governor's appeal panel

If the complainant is dissatisfied with the outcome at Stage 1 and wishes to take the matter further, they can escalate the complaint to Stage 2 – a meeting with members of the governing body's complaints committee, which will be formed of the first three, impartial, governors available. This is the final stage of the complaint's procedure.

'An outstanding school, which is deeply committed to the Catholic mission... this school inspires all within this faith community to live life to the full.' Ofsted 2017

TEMPLE ROAD, DEWSBURY, WEST YORKSHIRE, WF13 3QE

Tel: (01924) 488282

E-mail: office@stpaulinus.org

Website: www.stpaulinuscps.org.uk



St. Paulinus Catholic Primary Academy

Part of the Blessed Peter Snow Catholic Academy

Inspiring all to live, learn and love in the light of Jesus.

(cf John 8:12)



A request to escalate to Stage 2 must be made to the Chair of Governors, via the school office, **within 10 school days** of receipt of the Stage 1 response.

The Chair of Governors will record the date the complaint is received and acknowledge receipt of the complaint in writing (either by letter or email) **within 3 school days**.

Requests received outside of this time frame will only be considered if exceptional circumstances apply.

The Chair of Governors decides whether to convene the Complaints Committee to look into the complaint or commission the LA to start an investigation.

If the complaint is about the Headteacher then the Chair is advised to seek guidance from LA before proceeding.

If the complaint has already been through stage one & two and you still remain dissatisfied with the outcome as a result of the way in which the complaint has been handled, you can take it further to a governors' appeal panel. This is a formal process, and the ultimate recourse at school level.

- The purpose of this arrangement is to give you the chance to present your arguments in front of a panel of governors who have no prior knowledge of the details of the case and who can, therefore, consider it without prejudice.

- However, the aim of a panel is not to rehear the complaint. It is there to review how the complaint has been investigated and to determine whether this has been conducted fairly. It is there to establish facts and make recommendations which will reassure you that we have taken the complaint seriously.

The Chair of Governors will write to the complainant to inform them of the date of the meeting. They will aim to convene a meeting **within 20 school days** of receipt of the Stage 2 request. If this is not possible, the Chair will provide an anticipated date and keep the complainant informed.

If the complainant rejects the offer of three proposed dates, without good reason, the Chair will decide when to hold the meeting. It will then proceed in the complainant's absence on the basis of written submissions from both parties.

The complaints committee will consist of at least three governors with no prior involvement or knowledge of the complaint. Prior to the meeting, they will decide amongst themselves who will act as the Chair of the Complaints Committee. If there are fewer than three governors from St. Paulinus Catholic Primary Academy available, the Chair will source any additional, independent governors through another local school or through their LA's Governor Services team, in order to make up the committee. Alternatively, an entirely independent committee may be convened to hear the complaint at Stage 2.

The committee will decide whether to deal with the complaint by inviting parties to a meeting or through written representations, but in making their decision they will be sensitive to the complainant's needs.

'An outstanding school, which is deeply committed to the Catholic mission... this school inspires all within this faith community to live life to the full.' Ofsted 2017

TEMPLE ROAD, DEWSBURY, WEST YORKSHIRE, WF13 3QE

Tel: (01924) 488282

E-mail: office@stpaulinus.org

Website: www.stpaulinuscps.org.uk



St. Paulinus Catholic Primary Academy

Part of the Blessed Peter Snow Catholic Academy

Inspiring all to live, learn and love in the light of Jesus.

(cf John 8:12)



If the complainant is invited to attend the meeting, they may bring someone along to provide support. This can be a relative or friend. Generally, we do not encourage either party to bring legal representatives to the committee meeting. However, there may be occasions when legal representation is appropriate.

For instance, if a school employee is called as a witness in a complaint meeting, they may wish to be supported by union and/or legal representation.

Note: Complaints about staff conduct will not generally be handled under this complaint's procedure. Complainants will be advised that any staff conduct complaints will be considered under staff disciplinary procedures, if appropriate, but outcomes will not be shared with them.

Representatives from the media are not permitted to attend.

At **least 5 school days** before the meeting, the Clerk will:

- confirm and notify the complainant of the date, time and venue of the meeting, ensuring that, if the complainant is invited, the dates are convenient to all parties and that the venue and proceedings are accessible.
- request copies of any further written material to be submitted to the committee **at least 3 school days** before the meeting.

Any written material will be circulated to all parties **at least 3 school days** before the date of the meeting. The committee will not normally accept, as evidence, recordings of conversations that were obtained covertly and without the informed consent of all parties being recorded.

The committee will also not review any new complaints at this stage or consider evidence unrelated to the initial complaint to be included. New complaints must be dealt with from Stage 1 of the procedure.

The meeting will be held in private. Electronic recordings of meetings or conversations are not normally permitted unless a complainant's own disability or special needs require it. Prior knowledge and consent of all parties attending must be sought before meetings or conversations take place. Consent will be recorded in any minutes taken.

The committee will consider the complaint and all the evidence presented. The committee can:

- uphold the complaint in whole or in part
- dismiss the complaint in whole or in part.

If the complaint is upheld in whole or in part, the committee will:

- decide on the appropriate action to be taken to resolve the complaint
- where appropriate, recommend changes to the school's systems or procedures to prevent similar issues in the future.

'An outstanding school, which is deeply committed to the Catholic mission... this school inspires all within this faith community to live life to the full.' Ofsted 2017

TEMPLE ROAD, DEWSBURY, WEST YORKSHIRE, WF13 3QE

Tel: (01924) 488282

E-mail: office@stpaulinus.org

Website: www.stpaulinuscps.org.uk



St. Paulinus Catholic Primary Academy

Part of the Blessed Peter Snow Catholic Academy

Inspiring all to live, learn and love in the light of Jesus.

(cf John 8:12)



The Chair of the Committee will provide the complainant and St. Paulinus Catholic Primary Academy with a full explanation of their decision and the reason(s) for it, in writing, **within 3 school days**.

The letter to the complainant will include details of how to contact the Department for Education if they are dissatisfied with the way their complaint has been handled by St. Paulinus Catholic Primary Academy.

If the complaint is:

- jointly about the Chair and Vice Chair or
- the entire governing body or
- the majority of the governing body

Stage 2 will be heard by a committee of independent, co-opted governors.

The response will detail any actions taken to investigate the complaint and provide a full explanation of the decision made and the reason(s) for it. Where appropriate, it will include details of actions St Paulinus Catholic Primary Academy will take to resolve the complaint.

The response will also advise the complainant of how to escalate their complaint should they remain dissatisfied.

Closure of complaints

Very occasionally, a school and/or the LA will feel that it needs, regrettably, to close a complaint where the complainant is still dissatisfied.

We, and the local authority where appropriate, will do all we can to help to resolve a complaint against the school but sometimes it is simply not possible to meet all of the complainant's wishes. Sometimes it is simply a case of "agreeing to disagree".

If a complainant persists in making representations to the school – to the Headteacher, Chair of Governors or anyone else, Diocese– or to the local authority, this can be extremely time-consuming and can detract from our responsibility to look after the interests of all the children in our care.

For this reason, we are entitled to close correspondence (including personal approaches, as well as letters and telephone calls) on a complaint where we feel that we have taken all reasonable action to resolve the complaint and the complaint has exhausted our official process. The local authority will support us in this position, and especially where the complainant's action is causing distress to staff and/or pupils.

'An outstanding school, which is deeply committed to the Catholic mission... this school inspires all within this faith community to live life to the full.' Ofsted 2017

TEMPLE ROAD, DEWSBURY, WEST YORKSHIRE, WF13 3QE

Tel: (01924) 488282

E-mail: office@stpaulinus.org

Website: www.stpaulinuscps.org.uk



St. Paulinus Catholic Primary Academy

Part of the Blessed Peter Snow Catholic Academy

Inspiring all to live, learn and love in the light of Jesus.

(cf John 8:12)



Secretary of State Review

If the complainant believes the school did not handle their complaint in accordance with the published complaints procedure or they acted unlawfully or unreasonably in the exercise of their duties under education law, they can contact the Department for Education after they have completed Stage 2.

The Department for Education will not normally reinvestigate the substance of complaints or overturn any decisions made by St Paulinus Catholic Primary Academy. They will consider whether St Paulinus Catholic Primary Academy has adhered to education legislation and any statutory policies connected with the complaint.

The complainant can refer their complaint to the Department for Education online at: www.education.gov.uk/contactus, by telephone on: 0370 000 2288 or by writing to:

Department for Education
Piccadilly Gate
Store Street
Manchester
M1 2WD.

Please enclose with your letter to the DfE a copy of the complaint outcome. This will save time in that the DfE.

We would advise parents that, unless the school is shown to have behaved unreasonably or not to have followed their own procedures, there is likely to be little further action that can be taken, as governing bodies are empowered to deal with many issues without reference to either the Local Authority or the Secretary of State.

Other sources of information and advice

If your concern is about an aspect of special educational needs provision, which might include information about relevant voluntary organisations and support groups in Kirklees, you might like to e-mail: victoria.bruce@kirklees.gov.uk or Tel: 01484 221000

Roles and Responsibilities

Complainant

The complainant will receive a more effective response to the complaint if they:

- explain the complaint in full as early as possible

'An outstanding school, which is deeply committed to the Catholic mission... this school inspires all within this faith community to live life to the full.' Ofsted 2017

TEMPLE ROAD, DEWSBURY, WEST YORKSHIRE, WF13 3QE

Tel: (01924) 488282

E-mail: office@stpaulinus.org

Website: www.stpaulinuscps.org.uk



St. Paulinus Catholic Primary Academy

Part of the Blessed Peter Snow Catholic Academy

Inspiring all to live, learn and love in the light of Jesus.

(cf John 8:12)



- co-operate with the school in seeking a solution to the complaint
- respond promptly to requests for information or meetings or in agreeing the details of the complaint
- ask for assistance as needed
- treat all those involved in the complaint with respect
- refrain from publicising the details of their complaint on social media and respect confidentiality.

Investigator

The investigator's role is to establish the facts relevant to the complaint by:

- providing a comprehensive, open, transparent and fair consideration of the complaint through:
 - sensitive and thorough interviewing of the complainant to establish what has happened and who has been involved
 - interviewing staff and children/young people and other people relevant to the complaint
 - consideration of records and other relevant information
 - analysing information
- liaising with the complainant and the complaints co-ordinator as appropriate to clarify what the complainant feels would put things right.

The investigator should:

- conduct interviews with an open mind and be prepared to persist in the questioning
- keep notes of interviews or arrange for an independent note taker to record minutes of the meeting
- ensure that any papers produced during the investigation are kept securely pending any appeal
- be mindful of the timescales to respond
- prepare a comprehensive report for the Headteacher or complaints committee that sets out the facts, identifies solutions and recommends courses of action to resolve problems.

The Headteacher or complaints committee will then determine whether to uphold or dismiss the complaint and communicate that decision to the complainant, providing the appropriate escalation details.

'An outstanding school, which is deeply committed to the Catholic mission... this school inspires all within this faith community to live life to the full.' Ofsted 2017

TEMPLE ROAD, DEWSBURY, WEST YORKSHIRE, WF13 3QE

Tel: (01924) 488282

E-mail: office@stpaulinus.org

Website: www.stpaulinuscps.org.uk



St. Paulinus Catholic Primary Academy

Part of the Blessed Peter Snow Catholic Academy

Inspiring all to live, learn and love in the light of Jesus.

(cf John 8:12)



Complaints Co-ordinator

The complaints co-ordinator should:

- ensure that the complainant is fully updated at each stage of the procedure
- liaise with staff members, Chair of Governors, Diocese, clerk and LAs (if appropriate) to ensure the smooth running of the complaints procedure
- be aware of issues regarding:
 - sharing third party information
 - additional support. This may be needed by complainants when making a complaint including interpretation support or where the complainant is a child or young person
- keep records.

Clerk to the Governing Body

The Clerk is the contact point for the complainant and the committee and should:

- ensure that all people involved in the complaint procedure are aware of their legal rights and duties, including any under legislation relating to school complaints, education law, the Equality Act 2010, the Freedom of Information Act 2000, the Data Protection Act (DPA) 2018 and the General Data Protection Regulations (GDPR)
- set the date, time and venue of the meeting, ensuring that the dates are convenient to all parties (if they are invited to attend) and that the venue and proceedings are accessible
- collate any written material relevant to the complaint (for example; stage 1 paperwork, school and complainant submissions) and send it to the parties in advance of the meeting within an agreed timescale
- record the proceedings
- circulate the minutes of the meeting
- notify all parties of the committee's decision.

Committee Chair

The committee's chair, who is nominated in advance of the complaint meeting, should ensure that:

- both parties are asked (via the Clerk) to provide any additional information relating to the complaint by a specified date in advance of the meeting

'An outstanding school, which is deeply committed to the Catholic mission... this school inspires all within this faith community to live life to the full.' Ofsted 2017

TEMPLE ROAD, DEWSBURY, WEST YORKSHIRE, WF13 3QE

Tel: (01924) 488282

E-mail: office@stpaulinus.org

Website: www.stpaulinuscps.org.uk



St. Paulinus Catholic Primary Academy

Part of the Blessed Peter Snow Catholic Academy

Inspiring all to live, learn and love in the light of Jesus.

(cf John 8:12)



- the meeting is conducted in an informal manner, is not adversarial, and that, if all parties are invited to attend, everyone is treated with respect and courtesy
- complainants who may not be used to speaking at such a meeting are put at ease. This is particularly important if the complainant is a child/young person
- the remit of the committee is explained to the complainant
- written material is seen by everyone in attendance, provided it does not breach confidentiality or any individual's rights to privacy under the DPA 2018 or GDPR.

If a new issue arises it would be useful to give everyone the opportunity to consider and comment upon it; this may require a short adjournment of the meeting

- both the complainant and the school are given the opportunity to make their case and seek clarity, either through written submissions ahead of the meeting or verbally in the meeting itself
- the issues are addressed
- key findings of fact are made
- the committee is open-minded and acts independently
- no member of the committee has an external interest in the outcome of the proceedings or any involvement in an earlier stage of the procedure
- the meeting is minuted
- they liaise with the Clerk (and complaints co-ordinator, if the school has one).

Committee Member

Committee members should be aware that:

- the meeting must be independent and impartial, and should be seen to be so

No governor may sit on the committee if they have had a prior involvement in the complaint or in the circumstances surrounding it.

- the aim of the meeting should be to resolve the complaint and achieve reconciliation between the school and the complainant

We recognise that the complainant might not be satisfied with the outcome if the meeting does not find in their favour. It may only be possible to establish the facts and make recommendations.

- many complainants will feel nervous and inhibited in a formal setting

Parents/carers often feel emotional when discussing an issue that affects their child.

'An outstanding school, which is deeply committed to the Catholic mission... this school inspires all within this faith community to live life to the full.' Ofsted 2017

TEMPLE ROAD, DEWSBURY, WEST YORKSHIRE, WF13 3QE

Tel: (01924) 488282

E-mail: office@stpaulinus.org

Website: www.stpaulinuscps.org.uk



St. Paulinus Catholic Primary Academy

Part of the Blessed Peter Snow Catholic Academy

Inspiring all to live, learn and love in the light of Jesus.

(cf John 8:12)



- extra care needs to be taken when the complainant is a child/young person and present during all or part of the meeting

Careful consideration of the atmosphere and proceedings should ensure that the child/young person does not feel intimidated.

The committee should respect the views of the child/young person and give them equal consideration to those of adults.

If the child/young person is the complainant, the committee should ask in advance if any support is needed to help them present their complaint. Where the child/young person's parent is the complainant, the committee should give the parent the opportunity to say which parts of the meeting, if any, the child/young person needs to attend.

However, the parent should be advised that agreement might not always be possible if the parent wishes the child/young person to attend a part of the meeting that the committee considers is not in the child/young person's best interests.

- the welfare of the child/young person is paramount.

Policy Monitoring and Review

This policy will be reviewed following a 3-year Policy Review Cycle of the school or when there are significant changes to the curriculum that warrant it. It may also be reviewed earlier should it no longer comply with school practice or the legal requirements of schools.

'An outstanding school, which is deeply committed to the Catholic mission... this school inspires all within this faith community to live life to the full.' Ofsted 2017

TEMPLE ROAD, DEWSBURY, WEST YORKSHIRE, WF13 3QE

Tel: (01924) 488282

E-mail: office@stpaulinus.org

Website: www.stpaulinuscps.org.uk



St. Paulinus Catholic Primary Academy

Part of the Blessed Peter Snow Catholic Academy

Inspiring all to live, learn and love in the light of Jesus.

(cf John 8:12)



Appendix 1

Formal Stage Complaint Form

Please complete and return to Miss Hayes who will acknowledge receipt and explain what action will be taken.

Your name:
Pupil's name (if relevant):
Your relationship to the pupil (if relevant):
Address:
Postcode:
Day time telephone number:
Evening telephone number:

'An outstanding school, which is deeply committed to the Catholic mission... this school inspires all within this faith community to live life to the full.' Ofsted 2017

TEMPLE ROAD, DEWSBURY, WEST YORKSHIRE, WF13 3QE

Tel: (01924) 488282

E-mail: office@stpaulinus.org

Website: www.stpaulinuscps.org.uk



St. Paulinus Catholic Primary Academy

Part of the Blessed Peter Snow Catholic Academy

Inspiring all to live, learn and love in the light of Jesus.

(cf John 8:12)



Please give details of your complaint, including whether you have spoken to anybody at the school about it, if any action has already been taken to resolve your concern.

'An outstanding school, which is deeply committed to the Catholic mission... this school inspires all within this faith community to live life to the full.' Ofsted 2017

TEMPLE ROAD, DEWSBURY, WEST YORKSHIRE, WF13 3QE

Tel: (01924) 488282

E-mail: office@stpaulinus.org

Website: www.stpaulinuscps.org.uk



St. Paulinus Catholic Primary Academy

Part of the Blessed Peter Snow Catholic Academy

Inspiring all to live, learn and love in the light of Jesus.

(cf John 8:12)



What actions do you feel might resolve the problem at this stage?

Are you attaching any paperwork? If so, please give details.

Signature:

Date:

Official use

Date acknowledgement sent:

'An outstanding school, which is deeply committed to the Catholic mission... this school inspires all within this faith community to live life to the full.' Ofsted 2017

TEMPLE ROAD, DEWSBURY, WEST YORKSHIRE, WF13 3QE

Tel: (01924) 488282

E-mail: office@stpaulinus.org

Website: www.stpaulinuscps.org.uk



St. Paulinus Catholic Primary Academy

Part of the Blessed Peter Snow Catholic Academy

Inspiring all to live, learn and love in the light of Jesus.

(cf John 8:12)



By who:

Complaint referred to:

Date:

'An outstanding school, which is deeply committed to the Catholic mission... this school inspires all within this faith community to live life to the full.' Ofsted 2017

TEMPLE ROAD, DEWSBURY, WEST YORKSHIRE, WF13 3QE

Tel: (01924) 488282

E-mail: office@stpaulinus.org

Website: www.stpaulinuscps.org.uk



St. Paulinus Catholic Primary Academy

Part of the Blessed Peter Snow Catholic Academy

Inspiring all to live, learn and love in the light of Jesus.

(cf John 8:12)



Appendix 2

To be filled in by the school

School Complaints Outcome Log

Name of complainant:

Address:

Postcode:

Tel E-mail address

If applicable name of child(ren) and year at school

.....

Please ensure this log is passed on to the governor responsible for dealing with this complaint

Brief details of the complaint:

What stage has this complaint been through?

Informal stage

 by whom?

by whom?

by whom?

Brief details of what steps were taken by the school at the informal stage(s)

'An outstanding school, which is deeply committed to the Catholic mission... this school inspires all within this faith community to live life to the full.' Ofsted 2017

Tel: (01924) 488282

TEMPLE ROAD, DEWSBURY, WEST YORKSHIRE, WF13 3QE

E-mail: office@stpaulinus.org

Website: www.stpaulinuscps.org.uk



St. Paulinus Catholic Primary Academy

Part of the Blessed Peter Snow Catholic Academy

Inspiring all to live, learn and love in the light of Jesus.

(cf John 8:12)



Formal stage

What action(s) have been taken by the school to try and resolve the complaint?

Action taken by

Details of final outcome :

Has the complaint been closed? Yes ☐ at what stage

No ☐

If No has this moved to Review Stage ☐

Signature

Date

'An outstanding school, which is deeply committed to the Catholic mission... this school inspires all within this faith community to live life to the full.' Ofsted 2017

Tel: (01924) 488282

TEMPLE ROAD, DEWSBURY, WEST YORKSHIRE, WF13 3QE

E-mail: office@stpaulinus.org

Website: www.stpaulinuscps.org.uk



St. Paulinus Catholic Primary Academy

Part of the Blessed Peter Snow Catholic Academy

Inspiring all to live, learn and love in the light of Jesus.

(cf John 8:12)



Appendix 3

Model Complaint Closure Letter - Stage one

Dear Mr. & Mrs. X

FORMAL STAGE 1 COMPLAINT ABOUT Y AND SCHOOL Z

Thank you for your letter dated From your letter(s) it is clear that you are still unhappy with the situation. As a result I have decided to have the matter investigated as part of formal stage one of the school's complaints procedure. You complain that: summary of complaint to be stated. State each point separately. I have completed my investigation and can offer the following response(s) on each of the points you have raised.

1. Concerning your complaint that

2. Concerning your complaint that

It is important that you are clear about what action the school has taken at each stage of the process so far:

Informal stage, state what action was taken in response and the outcome of this.

Formal stage one, state what investigative action was taken in response and the outcome of this, including any remedial action to be taken if complaint is upheld.

I hope this response answers your concerns. Please let me know if you wish me to clarify any points.

In the meantime, if you are still not satisfied with my reply, there is a further stage of the complaints procedure that you can follow. This formal stage two is a review by a panel of governors who will look at the way in which your complaint has been dealt with. The panel will not, however, rehear the whole case.

To go to the next formal stage two, you should write to the Chair of Governors within 10 days of the receipt of this letter, giving your reasons why you wish to take your complaint further. If you are still not satisfied with the results of formal stage two (panel of governors outcome), you can complain to the Secretary of State for Education who will consider how your complaint has been handled.

Yours sincerely

'An outstanding school, which is deeply committed to the Catholic mission... this school inspires all within this faith community to live life to the full.' Ofsted 2017

TEMPLE ROAD, DEWSBURY, WEST YORKSHIRE, WF13 3QE

Tel: (01924) 488282

E-mail: office@stpaulinus.org

Website: www.stpaulinuscps.org.uk



St. Paulinus Catholic Primary Academy

Part of the Blessed Peter Snow Catholic Academy

Inspiring all to live, learn and love in the light of Jesus.

(cf John 8:12)



Appendix 4

Model Complaint Closure Letter - Stage two

Dear Mr. & Mrs. X

FORMAL STAGE 1 COMPLAINT ABOUT Y AND SCHOOL Z

The panel met on ...date... to hear your appeal regarding your complaint which can be summarised.

Legal or administrative background

State any legal or administrative background to the case, including any legislation relevant to the investigation.

The investigation

Set out the key facts about the complaint, the findings and conclusions from the formal stage one investigation, and any continuing concerns.

Conclusion

Set out the findings of the panel

Panel decision

Outcome of the decision

Please let me know if you wish me to clarify any points for you. In the meantime, if you remain dissatisfied with the way in which your complaint has been dealt with, you can contact the Secretary of State for Education through the DfE website www.education.gov.uk or by writing to the following address:

The School Complaints Unit (SCU)

Department for Education

Piccadilly

Gate Store Street Manchester

M1 2WD

Yours sincerely

'An outstanding school, which is deeply committed to the Catholic mission... this school inspires all within this faith community to live life to the full.' Ofsted 2017

TEMPLE ROAD, DEWSBURY, WEST YORKSHIRE, WF13 3QE

Tel: (01924) 488282

E-mail: office@stpaulinus.org

Website: www.stpaulinuscps.org.uk



St. Paulinus Catholic Primary Academy

Part of the Blessed Peter Snow Catholic Academy

Inspiring all to live, learn and love in the light of Jesus.

(cf John 8:12)



Appendix 5 - Policy for Unreasonable Complainants

St. Paulinus Catholic Primary Academy is committed to dealing with all complaints fairly and impartially, and to providing a high quality service to those who complain. We will not normally limit the contact complainants have with the school. However, we do not expect our staff to tolerate unacceptable behaviour and will take action to protect staff from that behaviour, including that which is abusive, offensive, or threatening.

St. Paulinus Catholic Primary Academy defines unreasonable complainants as 'those who, because of the frequency or nature of their contacts with the school, hinder our consideration of their or other people's complaints'. A complaint may be regarded as unreasonable when the person making the complaint: -

- refuses to articulate their complaint or specify the grounds of a complaint or the outcomes sought by raising the complaint, despite offers of assistance;
- refuses to co-operate with the complaints investigation process while still wishing their complaint to be resolved;
- refuses to accept that certain issues are not within the scope of a complaints procedure;
- insists on the complaint being dealt with in ways which are incompatible with the adopted complaints procedure or with good practice;
- introduces trivial or irrelevant information which the complainant expects to be taken into account and commented on, or raises large numbers of detailed but unimportant questions, and insists they are fully answered, often immediately and to their own timescales;
- makes unjustified complaints about staff who are trying to deal with the issues, and seeks to have them replaced;
- changes the basis of the complaint as the investigation proceeds;
- repeatedly makes the same complaint (despite previous investigations or responses concluding that the complaint is groundless or has been addressed);
- refuses to accept the findings of the investigation into that complaint where the school's complaint procedure has been fully and properly implemented and completed including referral to the Department for Education;
- seeks an unrealistic outcome;

'An outstanding school, which is deeply committed to the Catholic mission... this school inspires all within this faith community to live life to the full.' Ofsted 2017

TEMPLE ROAD, DEWSBURY, WEST YORKSHIRE, WF13 3QE

Tel: (01924) 488282

E-mail: office@stpaulinus.org

Website: www.stpaulinuscps.org.uk



St. Paulinus Catholic Primary Academy

Part of the Blessed Peter Snow Catholic Academy

Inspiring all to live, learn and love in the light of Jesus.

(cf John 8:12)



- Makes excessive demands on school time by frequent, lengthy, complicated and stressful contact with staff regarding the complaint in person, in writing, by email and by telephone while the complaint is being dealt with.

A complaint may also be considered unreasonable if the person making the complaint does so either face-to-face, by telephone or in writing or electronically: -

- maliciously;
- aggressively;
- using threats, intimidation or violence;
- using abusive, offensive, or discriminatory language;
- knowing it to be false;
- using falsified information; or
- publishing unacceptable information in a variety of media such as in social media websites and newspapers.

Complainants should limit the numbers of communications with a school while a complaint is being progressed. It is not helpful if repeated correspondence is sent (either by letter, phone, email or text) as it could delay the outcome being reached.

Whenever possible, the Headteacher or Chair of Governors will discuss any concerns with the complainant informally before applying an 'unreasonable' marking.

If the behaviour continues the Headteacher will write to the complainant explaining that their behaviour is unreasonable and asking them to change it. For complainants who excessively contact causing a significant level of disruption, we may specify methods of communication and limit the number of contacts in a communication plan. This will usually be reviewed after 6 months.

In response to any serious incident of aggression or violence, the concerns and actions taken will be put in writing immediately and the police informed. This may include banning an individual from St. Paulinus Catholic Primary Academy.

'An outstanding school, which is deeply committed to the Catholic mission... this school inspires all within this faith community to live life to the full.' Ofsted 2017

TEMPLE ROAD, DEWSBURY, WEST YORKSHIRE, WF13 3QE

Tel: (01924) 488282

E-mail: office@stpaulinus.org

Website: www.stpaulinuscps.org.uk